



FLOORLEUM SOILUD NW

category: low-maintenance vinyl sheet

“SOILUD NW” has a sharper design in the motif of kneaded soil.



FLOORLEUM SOILUD NW

category: low-maintenance vinyl sheet



Specification	overall thickness 2.0mm others Antibacterial Finished / Highly Durable UV-Coated Surface	width×length 1820mm×9m
JIS Registered No.	No. GB0506143 (JIS A.5705 Vinyl Sheet Flooring)	
Packing	9m/roll	
Net Weight	45.9kg/roll	
Recommended Adhesive from TOLI	dried mortar and concrete	Eco Royal Cement, Eco AR600
	humid mortar and concrete	Epo Gray ST, US Cement, US Cement (less-smelly), US200 US Cement, US Cement (less-smelly), US200
Welding/Seam Finish	TOLI UNDERLAY SHEET	
Notes on Installation	◆Welding rod for heat-welding is available on a color-by-color basis. ◆JOINT SHIELD method (JS method) by TOLI JOINT SHIELD is also applicable.	
	◆Seams should be heat-welded or finished with TOLI JOINT SHIELD, but when partial weight will be put on the floor TOLI JOINT SHIELD can also work on the top of TOLI UNDERLAY SHEET.	
	◆When you install 2 different sheets, each edge should be joined at the seam. (Do not cut in the middle of the sheet.)	
	◆For one week after installation, direct sunlight, sudden change of temperature due to air conditioning, and water washing should be avoided.	
	◆Please do not use the urethane adhesive other than US Cement, US Cement (less-smelly), US200. ◆As the sub-floor material, the underlayment like TOLI UNDERLAY SHEET (page 308) is also workable. Apply the same adhesive to the underlayment. Please note that the durability to dynamic load will be degraded when you install with the underlayment. ◆When you install FLOORLEUM SOILUD NW in the places where rollaway beds are used (e.g. a patient room of the hospital, a living room of the welfare facility and so forth), the epoxy adhesive such as TOLI Epo Gray ST or TOLI Epo Gray S and urethane adhesive such as US Cement, US Cement (less-smelly), US200 should be used even if the humidity of the sub-floor is less than 8%.	
Recommended Way of Maintenance from TOLI	◆No need to apply the maintenance wax on the surface. Clean the floor every day with an auto scrubber or a wet rag wrung out tightly. Use the detergent for fixed contamination. ◆Even if the wax is applied on the surface, it does not affect the quality of NW series. ◆Please do not use high-speed buffing machine. ◆High-speed buffing should be avoided. Otherwise highly durable UV coating will be abraded.	
Others	◆At the entrance of the building, the dust control mat should be laid in order to avoid soils and sands from outside. ◆Please do not use the roller brush for cleaning the sub-floor, the adhesive, and the loads. For instance, when the sub-floor is too weak, FLOORLEUM SOILUD NW might be destroyed from underneath. ◆Please be aware that some rubber casters might cause color-contamination. ◆Please note that the product has the indigenous odor from its materials.	

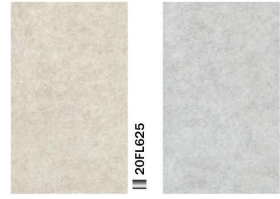
MADE IN JAPAN



20FL629

◆ Antibacterial Performance <in accordance with JIS Z 2801> In JIS testing criteria, when the value is more than 2.0, the product has sufficient antibacterial property.		
FLOORLEUM SOILUD NW	Escherichia Coli	Staphylococcus Aureus
More than 2.0	More than 2.0	More than 2.0

Conducted by KAREN TEST CENTER



20FL625



20FL626



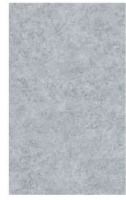
20FL627



20FL628



20FL621



20FL622



20FL623



▲ 20FL625/20FL627

Vinyl Sheet

Vinyl Sheet



20FL629

20FL630

20FL633

20FL635

20FL631

20FL632

20FL632

20FL634

278

vinyl sheet / FLOORLEUM SOILUD NW

FLOORLEUM SOILUD NW / vinyl sheet

279